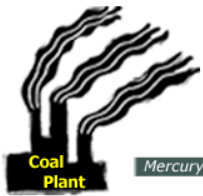


- The White Stallion Coal Plant is a Kentucky owned company. The owners owners are currently employed by the Kentucky Coal industry.
- The Permit has NOT been approved. The Application for Permit is being Contested in the Texas & US Federal Court system by our Attorneys and will remain in the Courts thru the remainder of 2010.
- **CARBON DIOXIDE (CO2)** smokestack emissions from the White Stallion Coal Plant will be the same as adding **1.7 million** cars to Matagorda County roads.
- 61 of every 1,000 people living within 30 miles of White Stallion Coal Plant will have Asthma. Centers for Disease Control and Prevention (CDC): Asthma accounts for 14 million lost days of school missed annually, and Asthma is the third-ranking cause of hospitalization among children younger than 15 years of age.
- American Lung Association: 24,000 people a year die prematurely, 38,000 heart attacks, and 12,000 hospital admissions because of toxic air emissions from Coal Plants.
- Texas Medical Association opposes Coal Plants due to **MERCURY** emissions.
- The Texas Catholic Bishops Conference has called for a slow, Moratorium approach to Coal Plants permits.
- The League of Women Voters is calling for a 10-year Moratorium on Coal Plants
- Electricity rates will NOT decrease. The White Stallion Coal Plant has no control over the price\$\$ of electricity charged to Matagorda County residents. All electricity goes onto the Statewide Grid, the same as all 300 power plants in Texas.
- Toxic air pollutants **MERCURY** and **DIOXIN**, will harm livestock and lessen the income for Matagorda ranchers.
- **MERCURY** is a toxic heavy metal: smokestack emissions will make the Colorado River un-fishable (same as Houston Ship Channel) — seafood from Matagorda County shrimp & fish farms will be unfit for human consumption (resulting in a loss of income for Matagorda County Seafood Farms)
- **1/70th of a teaspoon MERCURY** wind-borne onto a 25-acre lake will make the fish unfit to eat — White Stallion 60-Story smokestacks will release 100 lbs of poisonous **MERCURY** every year onto the Colorado River, Matagorda Bay, and local Matagorda County Seafood Farms. (Lavaca Bay has been a EPA SuperFund Site since 1993 due to **MERCURY** from Alcoa - since 1988 has been closed to the taking of fish and crabs by the Texas Department of State Health Services)
- **Coal Plants kill Tourism.** In mountain & coastal Counties throughout the US, other State Tourism Departments partner with County Commissioners to oppose newly proposed Coal Plants. The much anticipated 2nd home/weekend home growth in Matagorda County will not materialize. Affluent communities refuse to allow Coal Plants, and their citizens won't build 2nd homes in communities that have them.
- **Net job loss:** without 2nd home construction, jobs for carpenters, electricians, plumbers, & painters will never materialize. **EPA Mercury Restrictions** on the Colorado River & Matagorda Bay will eliminate recreational fishing therefore eliminating Retail Boating-Marine dealers, their repair services, and Fishing Guide Services.
- **Water:** White Stallion Coal Plant will remove 36,000 Acre-Feet of water from the Colorado river each year which will go up their 60-Story smokestacks. Perspective: 36,000 Acre-feet is 56 Square Miles of water 1 foot high — East Matagorda Bay is 59 Square Miles.
- **Sept. 9, 2009** — the EPA nullified the Texas (TCEQ) Air Permit Process saying *"Texas' Coal Plant permit process fails to follow the science-based US Clean Air Act"*.
- **Height:** White Stallion smokestacks will be same as a 60-Story building - on the flat coastal plain 60 stories will be visible for 20-30 miles.
- **Coal Ash:** White Stallion will store coal ash waste on site. The Coal Plant is located in the 100-year Flood Plain. **EPA Sea Level Rise Map:** area would be flooded several times per month.
- In the last few years, 115 Coal Plants have been stopped by grassroots groups partnering w/Doctors, local Clergy, and Real Estate Associations.
- The following companies have recently quit the US Chamber of Commerce because of Chamber opposition to Federal Clean Air Act Emission regulation of Coal Plants:
 Excelon - largest fleet of US Nuclear Power plants
 Pacific Gas & Electric - largest energy company in California
 PNM Energy - largest energy company in New Mexico
 Apple Computer
 Nike & Johnson & Johnson have threatend to quit the Chamber of Commerce
- There are no homes in America powered by Clean Coal. The Coal Industry has spent more on the phrase *Clean Coal* Advertising than the Tobacco Industry did trying to tell us cigarettes are safe.
- The following have come-out opposing the construction of new Coal Fired Power Plants:

NOAA	League of Women Voters	National Audubon Society
NASA	Center for Biological Diversity	American Bird Conservancy
Coalition of Texas Mayors	Natural Resources Defense Council	Ducks Unlimited
American Medical Association	National Wildlife Federation	Environmental Defense Fund
National Institute of Health	Union of Concerned Scientists	Sierra Club
American Lung Association	American Association for the Advancement	Texas Public Citizen
Physicians for Social Responsibility	of Science	

Making Connections

Mercury windborne onto area rivers, bays, and County seafood farms kills fish. Up the food chain, wetland & estuary birds who consume fish are killed. (1)



Mercury kills fish



eaten by birds

Mercury contaminated fish

kills birds



Tourism, tourism based businesses, net job & income \$\$ loss



1) EPA Analyses for the Mercury Study Report to Congress: <http://www.epa.gov/mercury/eco.htm>



Join the No Coal Coalition
www.NoCoalCoalition.org

The support you provided this organization during the past year has enabled us to grow and become an effective representative for the residents of Matagorda County.

Your donations are the primary means of financial support that enable this all-volunteer organization to function.

Donations may be made on our website or make checks



payable to the No Coal Coalition and send to:
 Treasurer No Coal Coalition
 901 PR 703
 Bay City, Tx 77414



For more information visit or contact the state-wide organizations that also oppose the construction of the White Stallion Coal Plant:

