

“White Stallion” power plant will be bad for the environment and public health



Still Want A Coal Plant In Your Back Yard?

Matagorda County and Bay City Will See Huge Increases in Pollution from this Plant

If the White Stallion Plant is built, Matagorda County would see an overall 30% increase in emissions.

White Stallion Emissions

| Permit # | MegaWatts | CO ₂ Tons/Yr | SO ₂ Tons/Yr | NOx (creates smog) Tons/Yr | Particulate Matter Tons/Yr | Mercury lb/Yr |
|----------|-----------|----------------------------|----------------------------|-------------------------------|-------------------------------|------------------|
| 86088 | 1,200 | 10 mil. | 4,955 | 4,047 | 1,792 | 96 |

Source: **EPA NEI Database and White Stallion's draft permit.

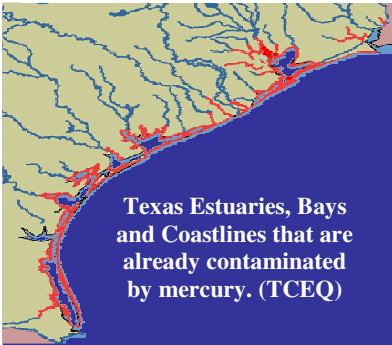
| | |
|--------------------|---|
| CO ₂ | Contributes to global warming and federal legislation may soon impact the cost of carbon emissions from coal plants |
| SO ₂ | Causes acid rain and breathing impairments |
| NOx | Forms smog, or ozone. NOx impacts an area's federal air quality standards and the increases from the proposed plant could threaten to put Matagorda County into non-attainment status |
| Particulate Matter | Fine particle pollution from power plants shortens the lives of 1,160 Texans each year, causes 196,149 lost work days, 1,105 hospitalizations and 33,987 asthma attacks (1,798 of which are so severe that they require emergency room visits). <i>Source: Clean Air Task Force</i> |
| Mercury | Mercury is a toxic heavy metal, which when ingested, can cause serious neurological damage, particularly to developing fetuses, infants, and children. Children can be exposed to mercury in the womb or through breast milk if their mothers ingest mercury tainted fish or by consuming contaminated fish themselves. |

What do these emission numbers really mean for Matagorda County?



Based on CO₂ emissions, the White Stallion Energy Center would be:

- Like adding **1,661,510** passenger vehicles to the roads
- The equivalent of CO₂ consumed by **63,276** acres of forest
- The same as the CO₂ emissions from 378 million home barbecues, far more than all those in the United States.
- The equivalent of over **1 billion** gallons of gasoline, enough to drive a pickup truck (at 15mpg) around the earth 1,650 times every day for a year.



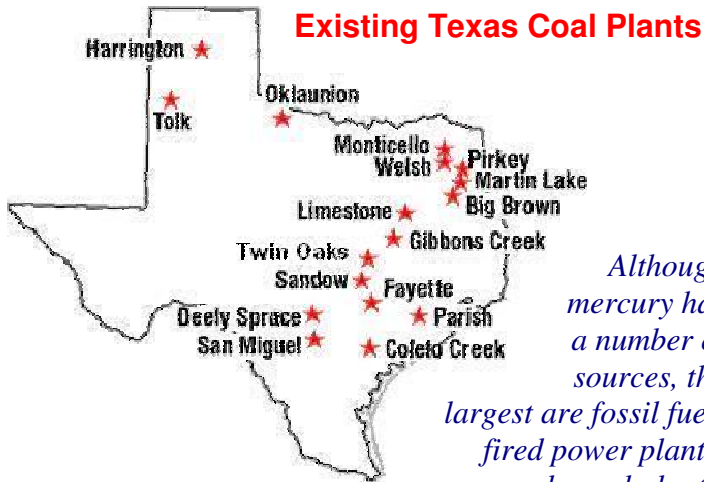
White Stallion will add 96 lbs of poisonous mercury every year to Matagorda Bay

Shark, Swordfish and King Mackerel from the Texas Gulf already contain high levels of mercury.

Exposure to mercury leads to learning disabilities and permanent brain damage in children.

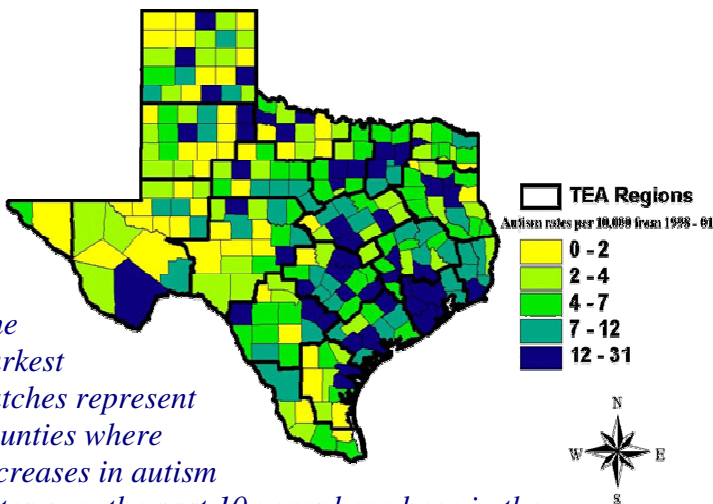
Mercury and Autism

The University of Texas Health Science Center in San Antonio published a new study on April 25th, 2008 showing: “a statistically significant link between pounds of industrial release of mercury and increased autism rates.” – Science Daily



Although mercury has a number of sources, the largest are fossil fuel-fired power plants, namely coal plants.

Autism rates 1998 - 2001 by counties in Texas. Aggregated from administrative data from the Texas Educational Agency (TEA)



The darkest patches represent counties where increases in autism rates over the past 10 years have been in the top 20 percent. These counties are frequently near coal plants.

White Stallion May Keep You From Taking Your Kids Fishing



Mercury emissions from the White Stallion power plant would contaminate the waterways in and

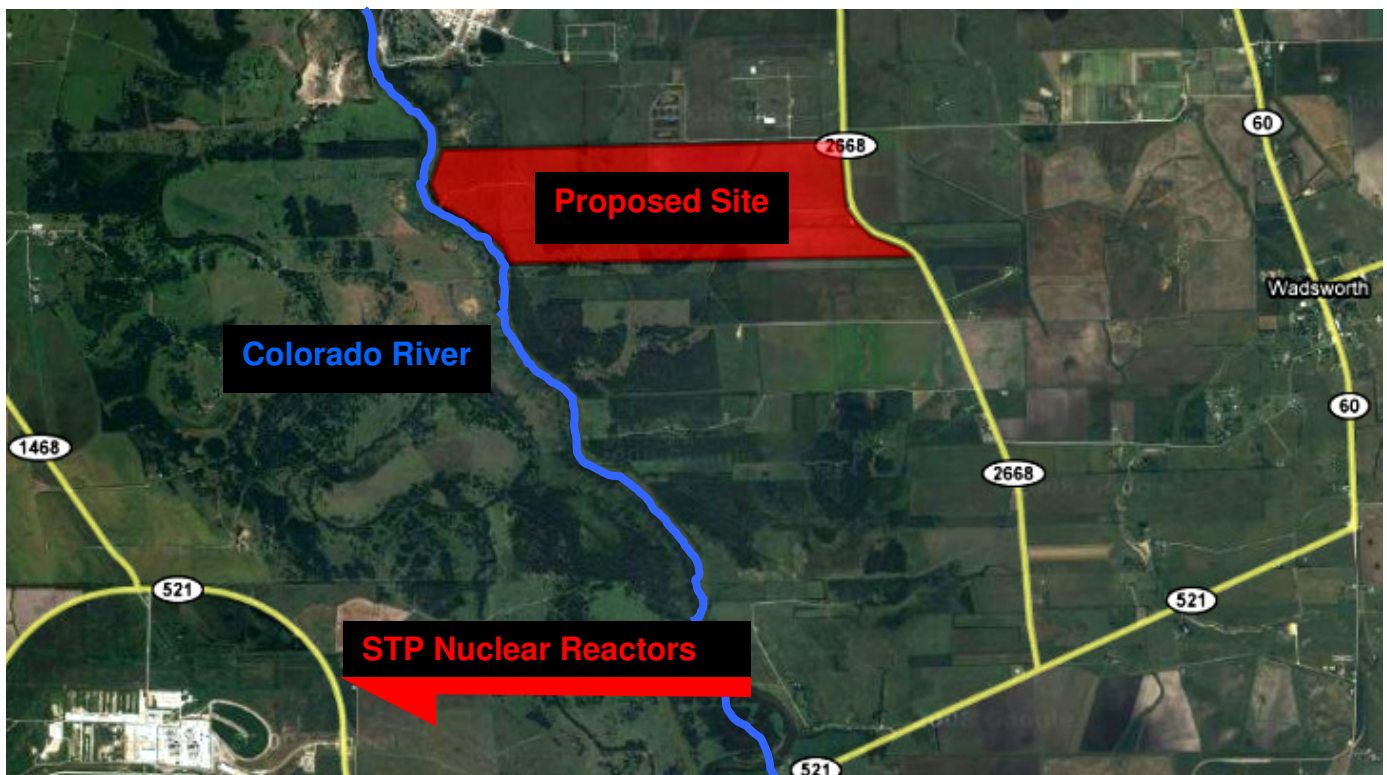
around Bay City, including Matagorda and East Matagorda Bays. The Gulf Coast is already under a mercury advisory for King Mackerel. The 100 pounds of additional mercury that White Stallion would emit every year risks further damage to the fish, birds and other wildlife. The proposed site is 10 miles from Big Boggy National Wildlife Refuge.

Mercury can cause permanent brain damage in children. Neurological damage can lead to impaired vision and hearing, speech impairment, and learning disabilities. Mercury ingested by a mother can be passed to her developing baby and lead to developmental problems even before birth.

Grave Water Concerns for White Stallion



- White Stallion will use petroleum (Pet) coke to fuel the plant. Pet coke is a byproduct of the refining industry that is similar to coal in its emissions.
- White Stallion plans to transport the pet coke by barge up the Colorado river and will require two barges a day traveling up and down the river.
- This may require dredging and widening of the river in numerous places, possibly displacing some residents along the river.
- This plant will join the proposed STP expansion, and the proposed Las Brisas power plant in Corpus Christi in additional consumption of water from the Colorado River. All told, this water consumption could easily exceed 120,000 acre-feet of water every year. That's enough water to cover 188 square miles with water 1 foot deep!
- Emissions from this plant will contaminate the river and the bay with mercury.
- Released waste water will increase the temperature of the river.
- The plant will be within the 100 year floodplain, and will have coal ash waste stored onsite. Coal ash is a largely unregulated, toxic waste that has resulted in terrible disasters causing contamination of local water – the latest (and worst) was in Tennessee in December 2008.



Cheaper, Cleaner, Cooler Ways to ReEnergize Texas

Texas is at a fork in the road, and we are about to spend billions on new, proposed plants to meet Texas's energy needs.

The Governor's Council on Competitiveness studied energy options for Texas and found that increased energy efficiency could result in the deferral or elimination of 21,899 megawatts, or almost all new generation needed to meet expected demand through 2030.



The High Risk Option:

Coal is expensive and greenhouse gas legislation will add to that expense
Coal is destructive to human health and the environment.

Low Risk Options (And Saves Money)

- **Efficiency**
 - Can decrease the energy used in homes by 30 to 50% at 1/3 the cost of a new coal plant
- **Better Building Codes**
 - The new State building code standard can cut energy use by 25%
 - A national group of architects developed the 2030 challenge to increase building efficiency by 50%, which was also adopted by the U.S. Council of Mayors, the League of Cities, ASHRE and AIA
- **Insulation**
 - Recent studies show that 80% of homes have leaky ducts.
- **Window Improvements**
 - Approximately 30% of the unwanted heat that enters homes comes in through windows
- **Solar Water Heating**
 - Can save average of 50-80% on heating bills
- **Air Conditioning**
 - Efficient air energy conditioners can reduce use by 38%.
- **Geothermal Heating**
 - A geothermal heat pump can cut electricity costs by 30-60% and they deliver 3-4 times more energy than they consume
- **Renewables**
 - Coastal wind power is available when you need it most (during the hottest part of the day)
 - Capital Costs are coming down
 - No carbon cost
 - Free fuels
 - Needs new energy storage tech
- **Combined Heating & Power (CHP)**
 - Can generate electricity and heat at 70-80% efficiency, twice that of a new coal plant, while emitting less pollution
 - Provides electricity, hot water and cooling